

**Kern County
&
The Sustainable
Groundwater
Management Act
("SGMA")**

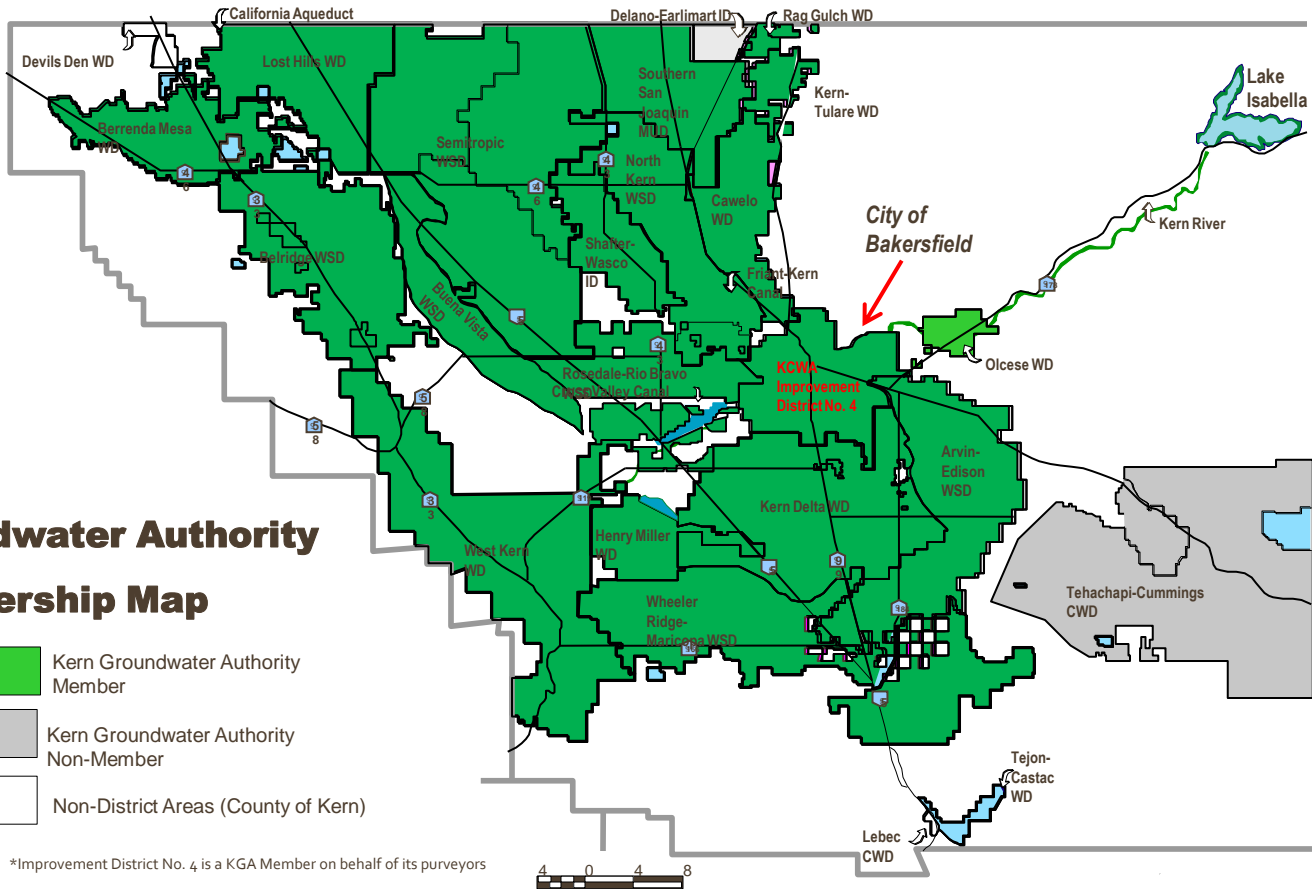
**A Discussion of
Options for
Implementation**



Groundwater Legislation Anticipated

- Formed Kern Groundwater Authority (“Authority”) early 2014
 - Experience with Joint Powers Authorities
 - Board exclusively elected officials
 - Current Agreement limits powers of Authority
 - 19 Members (County/Cities/Water Interests)
 - Meetings held monthly - open to and attended by public/interest groups etc.

Kern County & the SGMA



Kern Groundwater Authority Membership Map

SGMA – Fundamental Questions

GSA = Groundwater Sustainability Agency

GSP = Groundwater Sustainability Plan

- Who should act as the GSA for a specific area?
- Who should coordinate the data necessary for development of a GSP (or GSP's) for the basin?
- Who should develop the GSP (or GSP's) for your service area?
- Who should implement (GSA role) and enforce the GSP (or GSP's) for your service area?

What role should the Authority play (if any) in Development of a GSP for the Kern Basin?



"I'm trying to organize a stampede, but everybody's got their own agenda"

Most Pressing Issue - What organizational approach is the most reasonable, offers the most benefit and has the highest likelihood of success for Kern?

Basins may be managed under one of the following:

1. Single GSA – Single GSP
- 1.a Single GSA – Single GSP.....**Multiple "Plans"**
2. Multiple GSA's – Single GSP.....**Multiple "Plans"**
3. Multiple GSA's – Multiple GSP's

Success is predicated upon:

- Preservation of local control at as many levels as possible
 - Members should feel that they can and will have input into the process and that "others" will not decide their future
- The expectation that working together will provide an outcome that is better than the alternatives.
 - No one will want to participate or support in a process whose outcome is likely to be less desirable than other available alternatives. (state intervention/adjudication)
- Developing an approach to groundwater management within the Kern Basin that is flexible enough to accommodate the various interests and entities.

Option 1a Single GSA – Single GSPMultiple "Plans"

Single GSA

- Authority acts as GSA for Members & assumes responsibility for monitoring/reporting and implementation of member "Plans"consistent and within the limits of the "Plan".

Multiple Local "Plans" – Single GSP

- Authority members develop the equivalent of a GSP for their respective service areas.
- Each GSP is incorporated as a "chapter" into the Kern Basin GSP.

Option 2 Multiple GSA's – Single GSP.....Multiple "Plans"

Multiple GSA's

- Multiple areas/members of the Authority self designate as GSA's.
- Authority may or may not act as GSA for some Members

Single GSP

- Authority acts as coordinating entity/resource to compile member "Plans" into chapters of Single GSP.

Option 3 Multiple GSA's – Multiple GSP's

Multiple GSA's

- Multiple areas/members of the Authority self designate as GSA's.
- Authority may or may not act as GSA for some Members

Multiple GSP's

- Authority acts as coordinating entity/resource to ensure sum of GSP's within Basin meet "sustainability" requirements
- Authority may act as coordinating entity/resource to compile member "Plans" into chapters of a coordinated/multi-member GSP.

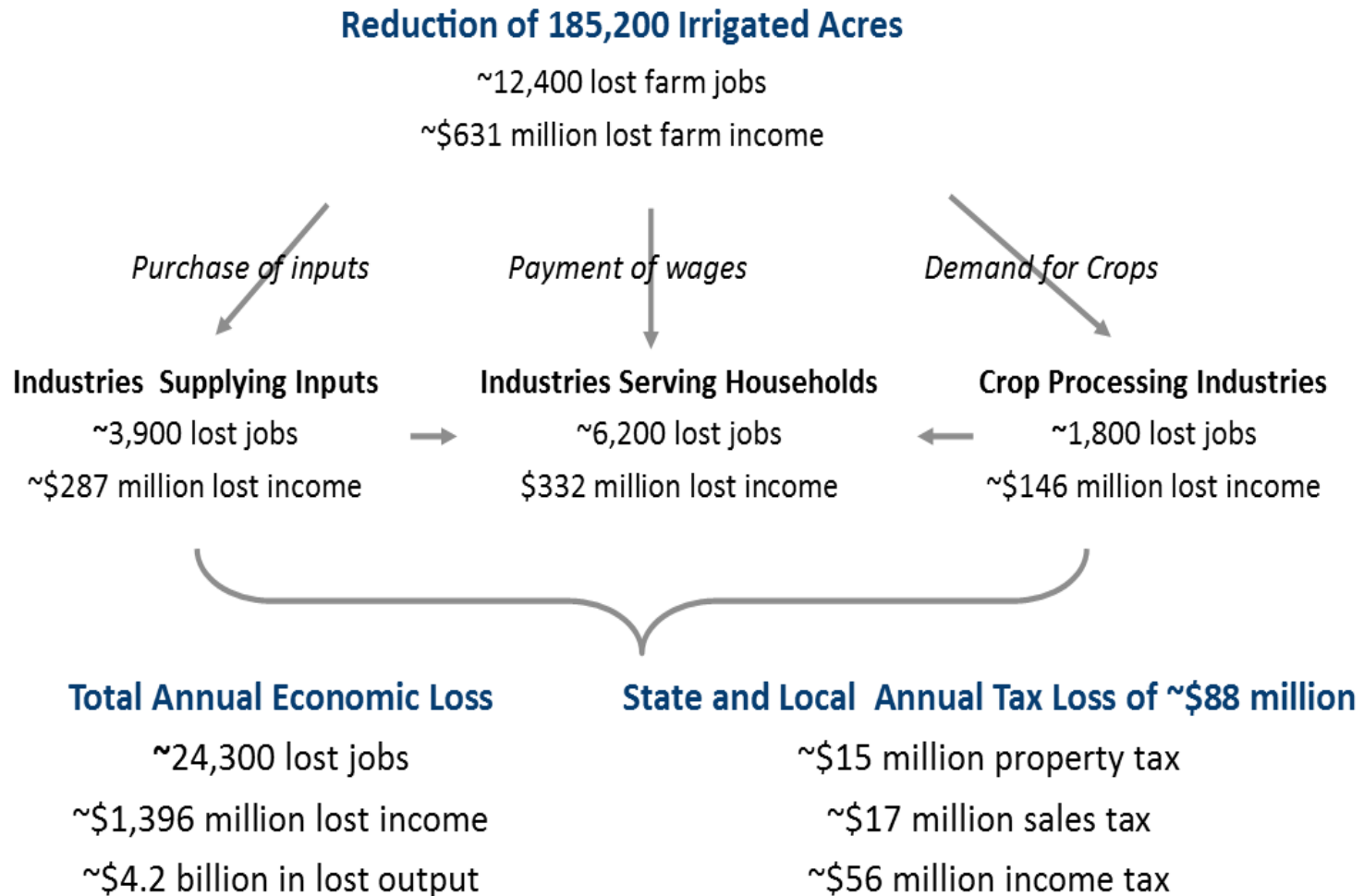
Organizational Approach – Kern County

Option	Basin Coordination		GSP Development		GSP Implementation (GSA Actions)	
	Member	Authority	Member	Authority	Member	Authority
1a-Single GSA Multiple "Plan"		X	X			X ¹
2 Multiple GSA Single GSP		X	X		X	X
3 Multiple GSA Multiple GSP		X	X		X	X

1. Authority only able to take actions consistent with approved member "Plan"

- Distinction without a difference.

Projected Economic Impacts in Kern



Final Thoughts:

- California water is a story of doing more with less
- Regulatory burdens/environmental restrictions challenge water providers but can be overcome
- Water is critical to a successful economic engine
 - Strategic Investments in infrastructure are needed
 - State Water Policy needs to be comprehensive, not piecemeal

